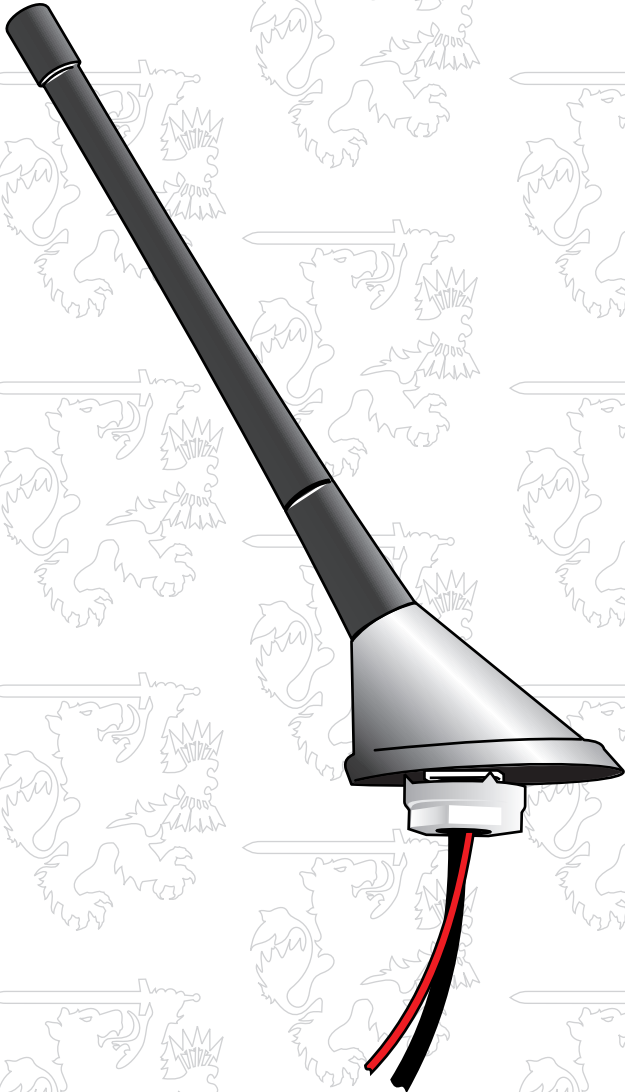


# Shark Attack II

AM/FM/HD

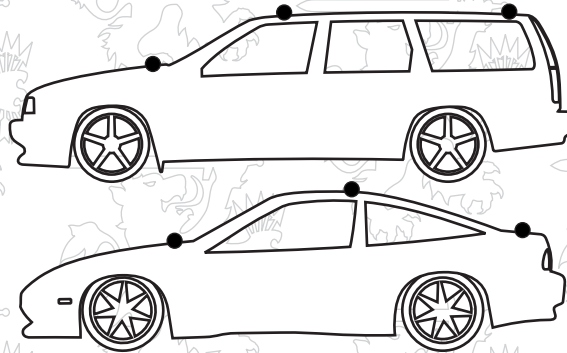
Custom Automotive Antenna  
Installation Guide



## Tools

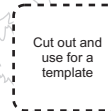
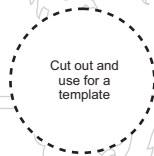
- \* 3/4in - 19mm drill bit
- \* power or cordless drill
- \* 7/8in - 22mm wrench or socket (adjustable wrench)
- \* side cutters

Additional tools may be required to remove the trim panels that block the passage to the interior of the car where the mounting and wiring of the antenna is located. These tools will vary from car to car so they can not be specified by this instruction sheet, please consult a shop manual for your specific vehicle or a shop familiar with your vehicle.



## Location

Plan your desired mounting position prior to getting started. Check to make sure there are no supports or wiring that will be in the way if drilling a new hole. Above are common locations for most cars. The easiest install will be installing the antenna in the existing hole. On vehicles that do not have an existing antenna hole, have an un-usable location or a new location is desired; a hole will need to be drilled.

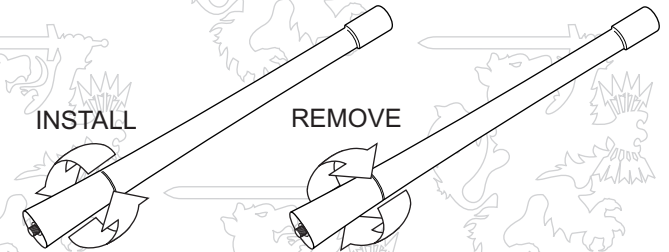


## Hole

Mounting holes need to be 3/4in - 19mm. The hole should not be larger than 1in - 25.4mm. If a larger hole is used a washer will need to be fabricated. If you have an existing square hole, nothing will need to be done as it is designed to lock into place.

## Mounting

The antenna base gets mounted outside the car with the wiring and threaded portion protruding into the hole in the cars body, the base nut will need to be fastened from the inside (the nut is 7/8 or 22mm). Do not over-tighten, it only needs to be tight enough to hold the antenna in place and seal to the body.



## Mast

The antenna mast is removable and replaceable. If the mast needs to be removed it unscrews in a counter-clockwise rotation ~ to reinstall turn clockwise. The antenna mast has a M6 hole in the base, the stud is M6 on the mast side and M5 of the base side.

